

FLOW OBSERVATORY REPORT — v1.0

λ _C Core Engine I Minimal Morphology Model

Scope: 2019/2023-01 → 2024-12

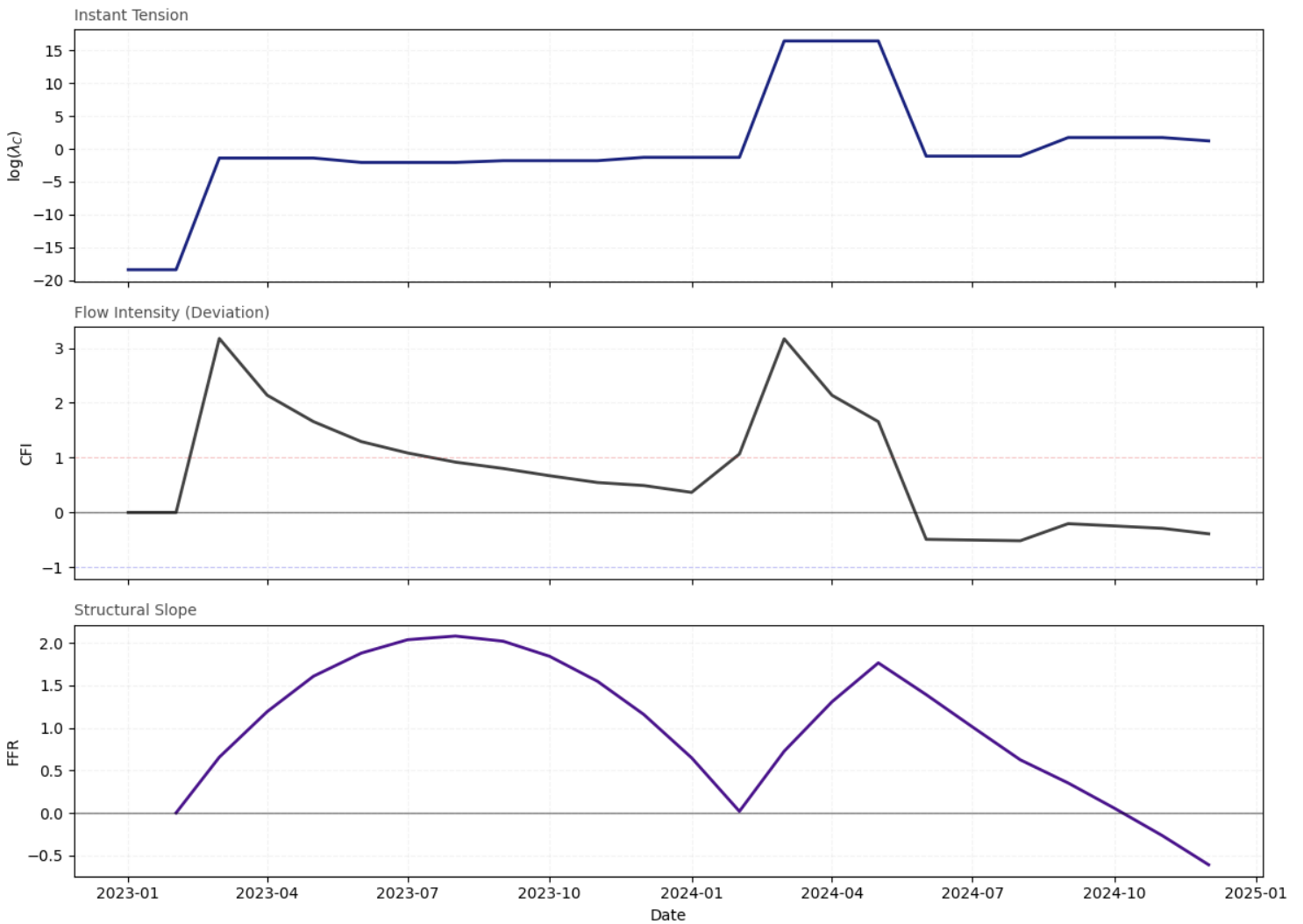
Flow State Summary

Ticker	Instant Tension	Flow Intensity	Structural Trend	Flow State
INTC	Moderate	Neutral	Contracting	Contracting Neutral Deviation
TSLA	Low	Negative	Contracting	Deep Contraction
MSFT	Low	Mixed	Stabilizing	Stabilization Phase
BA	Volatile	Positive	Recovering	Recovery Transition

INTC – Corporate Flow Profile

FLOW OBSERVATORY – INTC

λ_c Core Engine v1.0 | Minimal Morphology Model

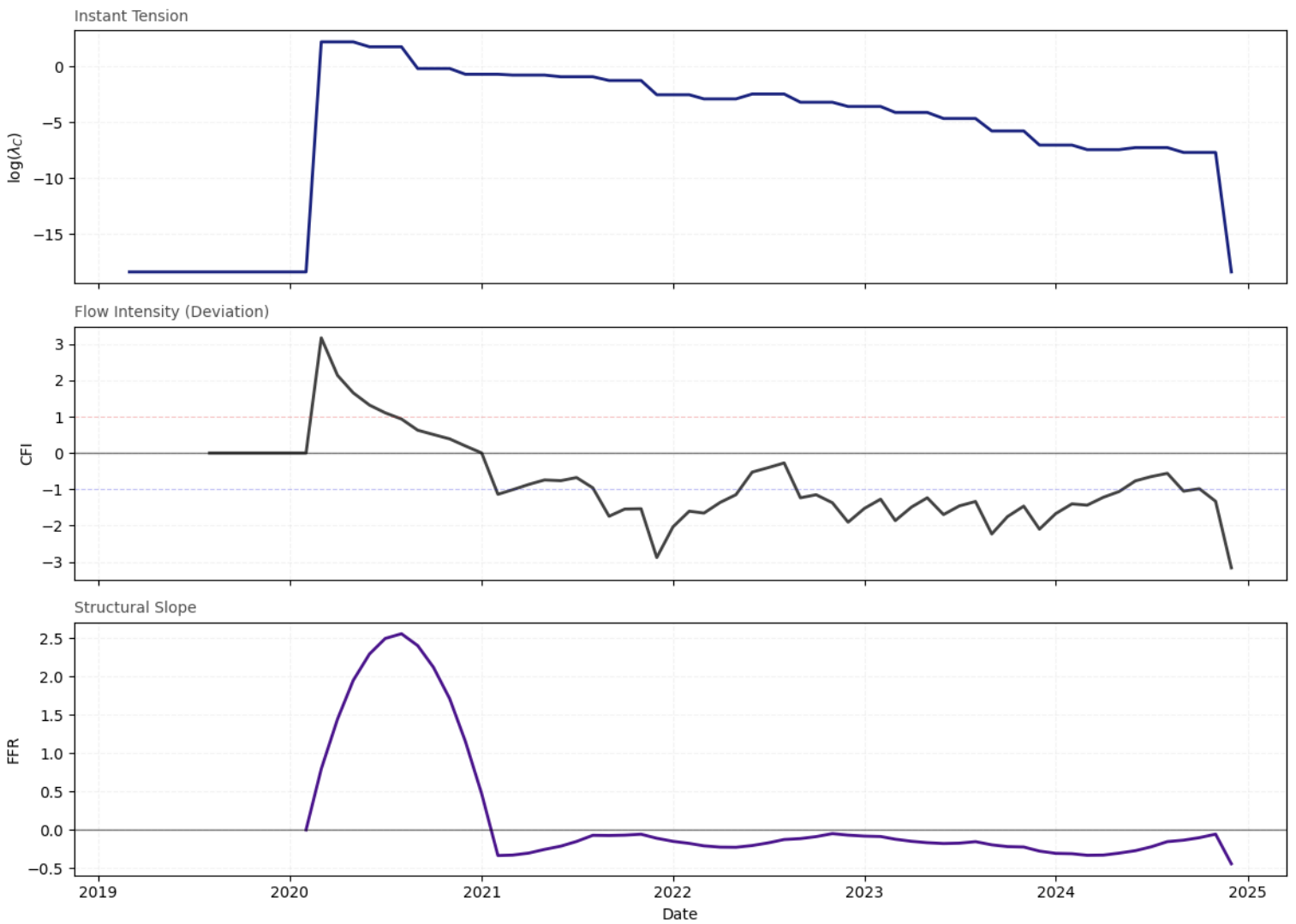


Flow State: Contracting | Neutral Deviation

TSLA – Corporate Flow Profile

FLOW OBSERVATORY – TSLA

λ_C Core Engine v1.0 | Minimal Morphology Model

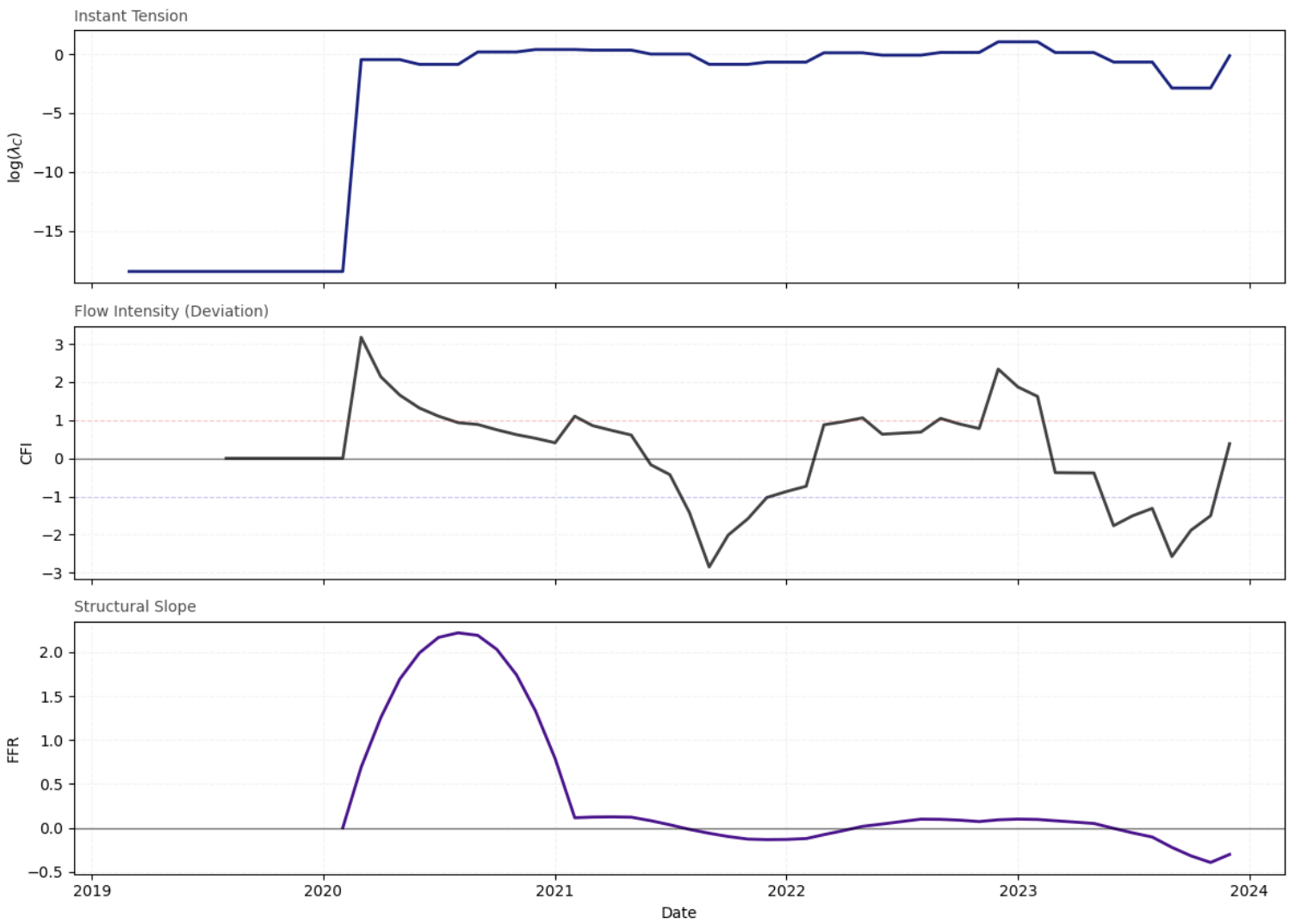


Flow State: Contracting | Negative Deviation

MSFT – Corporate Flow Profile

FLOW OBSERVATORY – MSFT

λ_c Core Engine v1.0 | Minimal Morphology Model

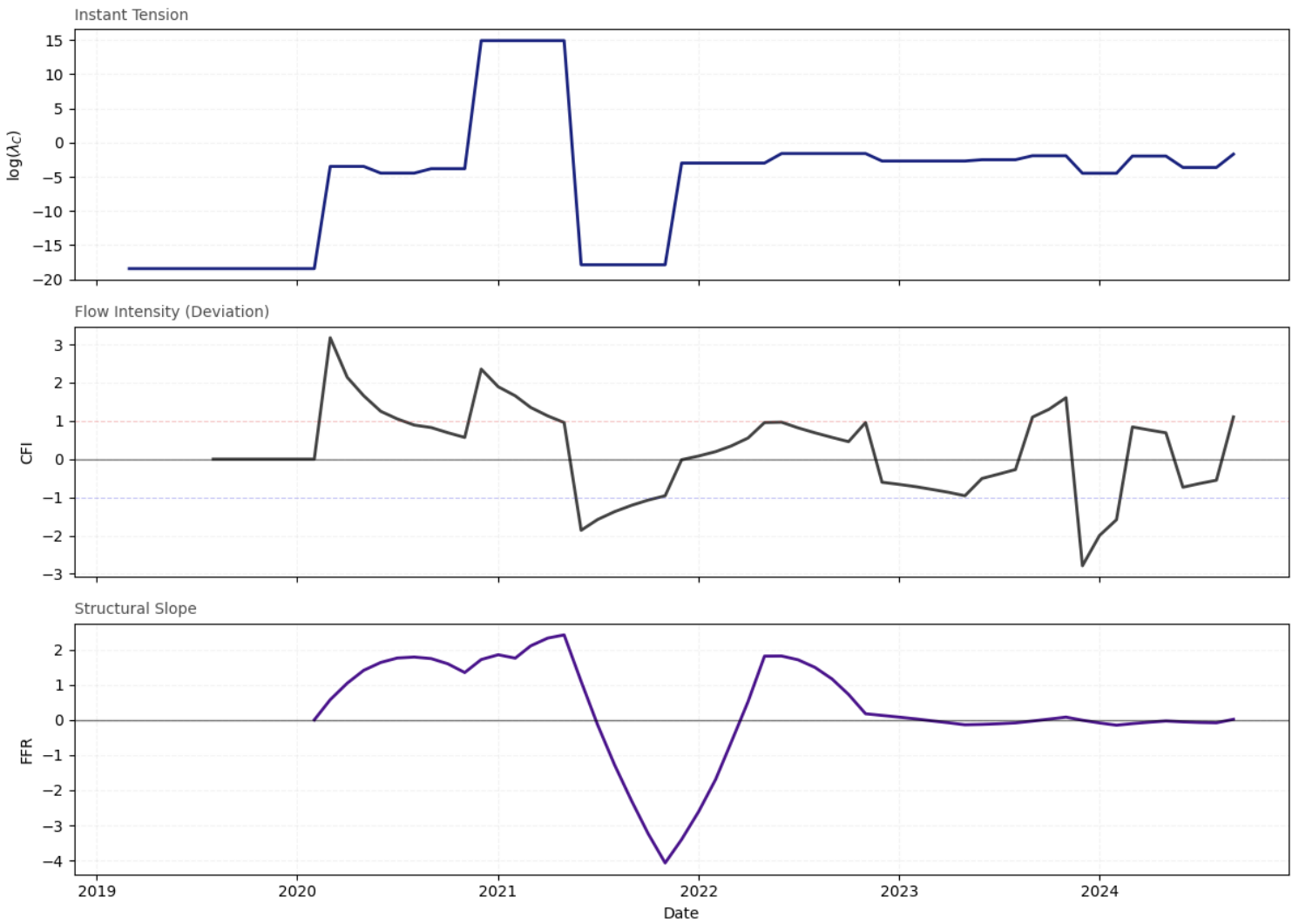


Flow State: Contracting | Neutral Deviation

BA – Corporate Flow Profile

FLOW OBSERVATORY – BA

λ_c Core Engine v1.0 | Minimal Morphology Model



Flow State: Expanding | Positive Deviation

Corporate Flow Observatory — Master Data Log (2023-2024)

Ticker	date	lambda_c	cfi	ffr
INTC	2024-03-01	13725200.0	3.16966	0.724638
INTC	2024-04-01	13725200.0	2.138886	1.306323
INTC	2024-05-01	13725200.0	1.657281	1.763251
INTC	2024-06-01	0.3267645	-0.490804	1.389935
INTC	2024-07-01	0.3267645	-0.503515	1.009939
INTC	2024-08-01	0.3267645	-0.516451	0.623266
INTC	2024-09-01	5.569355	-0.204936	0.351027
INTC	2024-10-01	5.569355	-0.246386	0.054131
INTC	2024-11-01	5.569355	-0.289964	-0.267421
INTC	2024-12-01	3.345218	-0.390303	-0.61017
TSLA	2024-03-01	0.0005846107	-1.438282	-0.332451
TSLA	2024-04-01	0.0005846107	-1.220689	-0.329852
TSLA	2024-05-01	0.0005846107	-1.062453	-0.303912
TSLA	2024-06-01	0.0007012581	-0.768614	-0.272248
TSLA	2024-07-01	0.0007012581	-0.65112	-0.222301
TSLA	2024-08-01	0.0007012581	-0.561062	-0.154072
TSLA	2024-09-01	0.0004535827	-1.053728	-0.135167
TSLA	2024-10-01	0.0004535827	-0.985052	-0.102755
TSLA	2024-11-01	0.0004535827	-1.331559	-0.056837
TSLA	2024-12-01	8.941997e-09	-3.165943	-0.442911
MSFT	2023-03-01	1.133623	-0.375796	0.079881
MSFT	2023-04-01	1.133623	-0.379965	0.06463
MSFT	2023-05-01	1.133623	-0.384153	0.049242
MSFT	2023-06-01	0.508005	-1.767112	-0.006309
MSFT	2023-07-01	0.508005	-1.50712	-0.057793
MSFT	2023-08-01	0.508005	-1.313651	-0.105208
MSFT	2023-09-01	0.056029	-2.574757	-0.222927
MSFT	2023-10-01	0.056029	-1.887793	-0.319559
MSFT	2023-11-01	0.056029	-1.50662	-0.395102
MSFT	2023-12-01	0.863872	0.384381	-0.303344
BA	2023-12-01	0.011282	-2.788721	-0.009865
BA	2024-01-01	0.011282	-1.997816	-0.08636

BA	2024-02-01	0.011282	-1.583159	-0.150365
BA	2024-03-01	0.139261	0.842695	-0.105221
BA	2024-04-01	0.139261	0.761918	-0.065161
BA	2024-05-01	0.139261	0.688414	-0.030186
BA	2024-06-01	0.026357	-0.733969	-0.055518
BA	2024-07-01	0.026357	-0.638803	-0.072939
BA	2024-08-01	0.026357	-0.550919	-0.082451
BA	2024-09-01	0.183915	1.105519	0.017029